

## ENSO Effects on Peanut Yield and Nitrogen Leaching

T Mavromatis, SS Jagtap and JW Jones<sup>1</sup>

### **ABSTRACT**

*Peanut growers in north Florida asked for help in managing the crop to increase yield and reduce yield variability using information on the pattern of large scale climate. The objectives of this study were to explore at four locations in the peanut belt of Florida and South Georgia the potential for improving peanut crop performance by altering crop management according to the phase of ENSO. The CROPGRO-Peanut model was used to simulate peanut yield responses to climate and management. The effects of planting date and irrigation management options on mean and variability of simulated crop yield and nitrogen leaching in different ENSO phases were estimated. This case study showed potential for enhancing peanut yields (1 to 8%) and reducing yield variability (2 to 12%) by tailoring planting dates to expected ENSO conditions, while at the same time reducing potential environmental damages from nitrogen leaching by 1 to 11%. Locations which appeared to have no ENSO linkages currently showed most responses to tailored management in this simulation study. Tailored management calls for later planting during a Niño, and earlier planting in a Niña. When planting dates were tailored to ENSO phases, simulations showed at least 10% lower nitrogen leaching from rainfed production systems in about 70% of the years. Among ENSO phases, La Niña seasons were shown to have greater nitrogen leaching, with little response to management changes relative to El Niño seasons. Tailored management may be most advantageous in El Niño seasons as a result of higher yields and lower N-leaching. Further research is needed before options derived from simulations and optimization can be recommended and adopted with confidence by growers and extension advisors.*

*Keywords:* ENSO, management decisions, peanut irrigation, planting date, N leaching

---

<sup>1</sup> Correspondence to: Dr. Shrikant S. Jagtap, Department of Agricultural and Biological Engineering, University of Florida, Gainesville, FL – 32611, U.S.A, Tel: 352-392-1864 Ext 261, e-mail: [SSJagtap@mail.ifas.ufl.edu](mailto:SSJagtap@mail.ifas.ufl.edu). Florida Agricultural Experiment Station, Journal Series No R-08269

## 1. INTRODUCTION

El Niño Southern Oscillation (ENSO) through their influence on the climate of Florida, exert considerable influence on agricultural production. The Florida Department of Agriculture attributed about \$165 million of losses in economic activity to agriculture and forestry in Florida due to the 1997-98 El Niño event. Adams et al. (1995) estimated the potential annual benefit of ENSO-based climate forecasts to agriculture in the Southeast US at around \$100 million. ENSO phases have measurable effects on yields of 7 of the 10 most important crops to the economy of the Southeast USA (Hansen et al. 1998; 2001). El Niño was associated with decreased winter yields of tomato (18% of long-term average), bell pepper (18%), corn (10%), sweet corn (15%) and snap beans (12%). El Niño events were associated with increased sugarcane yields following La Niña years, and increased yields of grapefruit (5%) and tangerines (13%) but decreased lime yields in the harvest following El Niño events. Furthermore, ENSO has a significant association with corn and tobacco yields, areas of soybean and cotton harvested, and total values of corn, soybean, peanut and tobacco in Alabama, Florida, Georgia and South Carolina. Hansen et al., (2001) showed that there is almost \$500 million difference in value of these four crops associated with ENSO.

Green et al. (1997) have shown that in Florida, El Niño has little discernable influence on total summer precipitation. In the summer climate impacts of El Niño events are more localized. With some exceptions, La Niña events show the reverse of the climate anomalies associated with El Niño events. Knowledge of ENSO events relative to crop growing season is important for understanding of analyses of ENSO's influence on agriculture. Although timing of ENSO events may vary among years, summer field crops (March-October) are most influenced by the preceding ENSO phase (Hansen et al., 2001). For southern Georgia, Hansen et al. (2001) attributed maize yield response to ENSO primarily to enhanced June precipitation in La Niña years, coinciding with tasseling when maize is most susceptible to water stress.

This paper investigates possible management options for peanut (*Arachis hypogaea* L.) production in the Southeast USA, assuming prior knowledge of El Niño phases. In a series of state-wide meetings with peanut farmers and extension agents, Jagtap et al. (2001b) and Hildebrand et al. (2000) found that peanut farmers in Florida repeatedly requested information on expected climate of the upcoming season to improve yields and irrigation management decisions. Water stress and planting dates were identified as the most important factors limiting peanut yield in the state. When irrigation is not an option, farmers hope to control the timing of water deficit by selecting sowing dates that minimize water stress and its impact on yield. When irrigation was feasible, sowing times as well as timing and amount of irrigation were the most important factors to reduce costs.

Highly productive but relatively small farms and high levels of inputs dominate peanut production at these sites. Although peanut is not fertilized with nitrogen, it symbiotically fixes large quantities of nitrogen that are left behind in residues after harvest. When decomposed, these residues release nitrogen that may leach into the ground water creating adverse off-site effects. As there is substantial rainfall during and after harvesting peanuts in Florida and Georgia, there are concerns about the environmental and health impacts of nitrate from agricultural fields (Murphy et al., 2000).

Little if any was known about how either planting date and irrigation practices based on ENSO may improve peanut yield in these regions. Elsewhere, simulation studies have shown associations between El Niño phases and yields of peanuts in Australia (Meinke et al., 1996); corn in Zimbabwe (Phillips et al.; 1998) and Argentina (Ferreira et al., 2001), as well as mix of crops (Messina et al.; 1999; Jones et al., 2000; Hansen et al., 2001). Crop models were the preferred choice of analysis because of their ability to simulate yield response to alternate management conditions, such as planting date, row spacing, plant population, irrigation and cultivar choice, over many years of historical weather records (Boote and Pickering, 1996; Boote et al., 1998; Meinke and Hammer, 1995).

No attempt has been made to assess the likely effects of El Niño phases and management on nutrient leaching. The objectives of this paper were to explore for three

locations in Florida and one in Georgia (i) how choice of planting date and irrigation management options affected simulated peanut yields and yield variability and (ii) how the tailored management practices (with respect to yield and yield variability) affected the simulated N leaching of rainfed and irrigated peanuts.

## 2. MATERIAL AND METHODS

### 2.1 Study sites

Three sites were selected in North Florida (Tallahassee 30.23°N, 84.22°W; Milton 30.78°N, 87.01°W; and Levy 29.42°N, 82.82°W), and one in South Georgia (Tifton 31.5°N, 83.5°W) with an elevation for all stations being close to sea level (<100m). Peanut is one of the main crops grown in these areas (**Fig. 1**). Early planting begins in April and ends by May in Florida and June in Georgia (NASS, 1997). Most farmers, however, plant during the optimum-planting window of 15 April to 1<sup>st</sup> May in Florida and about two weeks later in Georgia. Peanuts normally mature in approximately 135-140 days after planting (**Fig. 1**). The same variety may take 15 to 30 days longer to mature when planted in early or late season.

### 2.2 Climate and ENSO phases

Daily weather data for all sites from 1947 to 1990 were obtained from the National Climatic Data Center Summary of the Day database (EarthInfo, 1996). Daily weather records for the most recent years in Tifton were obtained from the Georgia Automated Environmental Monitoring Network (Hoogenboom and Gresham, 1997). Florida weather data after 1990 are from the Florida Automated Weather Network (<http://fawn.ifas.ufl.edu>). The weather data from Tallahassee and Milton covered the period 1948 to 1998. The data series started a year earlier for Tifton (1947 to 1998) and somewhat later in Levy (1956 to 1998). Daily solar irradiance data were available only for Tifton and Tallahassee. For Milton and Levy, they were estimated from daily air temperature, using RadEst v 3.0, calibrated for nearby Tallahassee and Gainesville (29.63N, 82.37W).

El Niño phases (El Niño, La Niña and neutral) were categorized by the Japan Meteorological Agency (JMA, 1991) definition based on five-month running means of spatially-averaged sea surface temperature (SST) anomalies in the region of the tropical

Pacific Ocean between 4°N – 4°S and 90 -150 °W. A crop year (from March to October) for our locations was classified as El Niño (La Niña) if the SST anomalies were  $\geq 0.5$  °C ( $\leq 0.5$  °C) for at least six consecutive months, and if this 6-month period started before October of the previous year (Meyers et al., 1999). Similarly, fallow period (Nov-Feb) is under the current years ENSO phase. The period 1947 to 1998 included 12 El Niño (1952, 58, 64, 66, 70, 73, 77, 83, 87, 88, 92 and 98) and 11 La Niña events (1950, 55, 56, 57, 65, 68, 71, 72, 74, 76 and 1989). The remaining 28 years were neutral.

### **2.3 Crop Simulations**

Peanut simulations were performed using the CROPGRO-Peanut (Jones et al., 1998; Boote et al., 1998; Hoogenboom et al., 1992; 1994; Boote and Tollenaar, 1994), a dynamic process crop model that simulates crop carbon, soil water, and crop and soil nitrogen balances under different climate, soil, and management conditions. It includes light interception, leaf-level photosynthesis, soil N balance, N uptake, N<sub>2</sub> fixation, soil water balance, evapotranspiration, respiration, leaf area growth, pod and seed addition, growth of component parts, root growth, senescence, N mobilization, carbohydrate dynamics, and crop development processes. CROPGRO-Peanut is available as part of the DSSAT V 3.5 (Jones et al., 1998) software. The model has been coupled with a geographic information system for site-specific production recommendations.

The CROPGRO-Peanut model was calibrated with 7 on-station trials at Gainesville, FL (Boote and Jones, 1988a; Boote et al., 1988b) and validated with 21 on-farm trials in Levy and Jackson counties in north Florida (Boote et al., 1989; Gilbert et al., 2001). Jackson county sites were in-between Milton (180 km by road to east) and Tallahassee (100 km to north-west), and to 240 km south of Tifton, Georgia (Fig. 1). When simulated yields were compared to measured yields at Gainesville, FL, yield was under predicted 3 times (range -20% to -5%) and over predicted in 4 out of the 7 times (range +1 to +23%) with an average absolute error of 13%. In 3 on-farm evaluations in 1988, the model tended to over predict yields on farms with disease and nematode problems on average by +33%. In 1989 the model errors were reduced to about +10% (Boote et al., 1989). Gilbert et al. (2001) also validated the model on 15 farms in Levy and Jackson counties in north Florida. In the years and fields that had low disease pressure, the model simulations were 9% above observed yields. Fields that had high

levels of disease problems, the model simulations were 24 to 44% above observed yields (Gilbert et al., 2001). In all these simulation trails, CROPGRO-Peanut did correctly predict relative yields decreases due to water stress. The model has also been compared across multiple sites spanning several climatic zones in India and was found to accurately predict soil water contents and yield across sowing dates and soils (Singh et al., 1994).

CROPGRO-Peanut appears to be useful as a predictor of optimal peanut yield under given cultivar, soil, weather and management variables (Boote et al., 1998). It does not explicitly simulate soil fertility or biotic stresses such as disease, insects or nematodes and may over predict yield. An empirical soil fertility and soil-disease correction factor is included as an input to bring average simulated yield for locations where climatic peanut yield potential is not attained due to biotic stresses, closer to those observed yields. In experimental studies, Boote et al. (1997) have estimated this factor to be 0.92 for all Florida locations. Due to the higher incidence of soil-based pests and diseases in Tifton than in Florida, this factor is 0.77 for Tifton (Mavromatis et al., 2001). The soil fertility and soil-disease factor reduces canopy photosynthesis by 8% in Florida and 23% in Georgia daily throughout the growing season and therefore biomass growth rate. Even with the correction factor, CROPGRO-Peanut may still over predict observed on-farm yield under excessive disease and pest pressure. In a regional study Jagtap and Jones (2001a) computed a yield correction factors ranging from 0.40 to 0.50 to reduce bias between simulated and observed soybean yields over more than 75% of the state of Georgia. The yield correction factors indicate the extent of yield gap between actual and achievable yields currently present due to uncontrolled stresses.

Simulation study used Florunner, which is the most widely (73% of total US production; Raymer et al., 1989; 1997) grown cultivar in the region due to its combination of commercially desirable characteristics and the ability to yield relatively well under most conditions. In this simulation study, Florunner was sown in 0.61 m rows at a density of 16 plants m<sup>-2</sup>. For each location, representative soil characteristics and management practices were obtained from published studies and researchers familiar with each region. The soil type and family in Tifton was described by Mavromatis et al. (2001). The VEMAP soil database was used for the locations in Florida. VEMAP is a 0.5-degree (approximately 50 km) “gridded” database that is based on the 10-km soil

database developed by Kern (1994; 1995) using the USDA Soil Conservation Service national soil database (NATSGO).

Planting date was the main experimental treatment that was tested for differences in yields between ENSO phases. Other management options, such as changing planting density, were not considered in our study since peanut growers do not consider them as options. Since peanut is a crop that is characterized by its lack of photoperiod sensitivity and high drought tolerance (Boote et al., 1998), a rather wide planting window was used at one-week intervals (from March 15 to June 28) in order to explore the modeled rainfed and irrigated yield crop response to sowing date.

The first year of simulation was initialized with soil water at 75% of water-holding capacity in line with relatively wet January to March period (Jagtap and Jones, 2001a). Subsequent simulations in 2<sup>nd</sup> year onwards were conducted as a continuous sequence of crop and bare fallow with carryover of soil water, residues and nitrogen. Two irrigation options were explored. CROPGRO was set to automatically apply one inch (0.025m) of water when needed (i.e. whenever the available soil water in the top 0.3 m root zone was depleted by 25% or more) from first pod to harvest maturity (pod filling irrigation), a common current practice (K.J. Boote, personal communication). Water stress is a unit less value between 0 and 1 computed daily as a ratio of water deficit (i.e. the difference between demand for water and supply of water) to water demand.

Weight of 100 seeds was used as a seed quality indicator (Pedelini, 1988) and N leaching during the growing season (Mar-Oct) and the following bare fallow period (Nov-Feb) was used as an index of environmental quality. The effects of tillage, pests, and diseases, water logging, lodging and harvest losses were not simulated. Simulated yield and weight of seeds are reported as dry weights.

#### **2.4 Selecting optimum planting date**

We assumed that there are wide ranges of plausible planting dates that potentially could maximize peanut yields and minimize year-to-year variability. The optimization procedure identified a planting date that resulted in the highest yield followed by the lowest coefficient of variation (CV) for all years during each of the three ENSO phases. When two planting dates gave the same yield, one with the lowest CV was selected as the

optimum planting date. Both these criteria must be satisfied to avoid situations where one planting gives maximum yield but another planting date gives the minimum CV.

## **2.5 Analyses**

An independent t-test was used to test whether the ENSO phases affected simulated yields for each location when the assumptions of normality and equality of variance held. If tests of either assumption failed, the nonparametric Mann-Whitney (1947) Rank Sum test was used instead. To test the hypothesis of equal interannual variability between ENSO phases, Levene's method (1960) was applied when the samples were normally distributed. However, when a Kolmogorov-Smirnov single-sample test (Conover, 1999) indicated significant non-normality, the Brown and Forsythe (1974) modification of Levene's test was applied.

The effects of peanut management (planting date and irrigation) tailored to ENSO phases on simulated yield (mean and coefficient of variation-CV), weight per 100 seeds, and N leaching were compared with those of current management (rainfed and irrigated), and were reported as deviations on a percent basis. The same statistical tests described before were used to test the statistical significance of percent changes.

## **3. RESULTS AND DISCUSSION**

### **3.1 Response of Rainfed Simulated Yield and Weight per Seed to ENSO Phases**

Simulated mean yield (CV) varied from 3262 kg/ha (24%) at Tifton to a high of 5405 kg/ha (13%) at Levy. Yields (CV) were higher (lower) during La Niña events and lower (higher) during El Niño years compared to all year means in all locations (**Table 1**). Additionally, for rainfed planting dates yields were higher during La Niña events than for Neutral and El Niño years at all locations. Our results agree with the findings of Hansen et al. (2001), who also identified this tendency in statewide mean peanut production in Florida using historical records. The largest and smallest mean yield differences were found between La Niña and Neutral events (from 0.3 % in Levy to 18.5 % in Tifton). Only Tifton showed higher peanut yield during El Niño relative to Neutral years. No significant differences in mean simulated peanut yields were found among ENSO phases for the current planting dates in three locations (Tifton, Tallahassee and Milton). In Levy, however, the mean yield for El Niño events was significantly lower

(10%) than the respective mean for Neutral years. The year-to-year variability for El Niño years was also found to be significantly higher ( $P < 0.05$ ) than for Neutral years in all sites but Tifton.

Simulated peanut yields for early plantings during La Niña years in all locations but Levy were higher than for the other two phases (**Fig 2a-c**). In Levy, the mean simulated yield for La Niña increased as planting was delayed (**Fig. 2d**). The yield declined sharply for May or later plantings. The Florida locations, in contrast with Tifton, showed large yield differences between Neutral and El Niño years. These simulated yield responses to planting dates are consistent with current planting practices in these regions. Planting is usually completed by 10<sup>th</sup> June in Georgia and by 15<sup>th</sup> May in Florida (**Fig 1**; NASS, 1997).

Higher yields contributed to higher seed weights in Florida compared to Georgia. Keeping in line with higher yields, rainfall and sandy Florida soils, N leaching was 3 to 4 times more than in Georgia (**Table 1**). Annual N leaching for planting after La Niña events was 15-40% higher than for plantings following El Niño events.

The CV for El Niño years in Tallahassee and Milton was substantially higher than for the other two phases for plantings early in the season, reaching its minimum values for May 17 and early June planting dates, respectively (**Fig. 3b-c**). The CV for La Niña and Neutral events, on the other hand, did not show much variation with planting date. CV of yield in Levy decreased sharply with planting date until the end of April when the CV of Neutral events achieved its lowest values (**Fig. 3d**). The CV in Tifton, in contrast to the other locations, was less responsive to changes in planting date (**Fig. 3a**).

The yield gain (loss) by tailoring planting of rainfed peanut by ENSO phase was not significantly different at the 95% confidence level. However, the gains in yield, seed weight and N leaching were generally higher than optimized values for all years (**Table 2**). The mean yield in Tifton and Milton increased by more than 3% above current planting date yields for all ENSO phases. For all the other sites and phases, the benefits of shifting the timing of planting would be more related to a reduction in the CV rather than an increase in the mean yield. That was the case particularly for the Florida locations during El Niño. Weight per seed marginally but consistently increased in most cases and N leaching was reduced for La Niña and El Niño seasons (**Table 2**). These benefits in El

Niño years were the results of postponing current planting dates by 21 days (except at Levy). Our simulated results are consistent with the response of some peanut farmers in northern Florida and South Georgia in 1998 (Letson, 2001). The farmers, being aware that 1998 was an El Niño year, delayed planting. Those who did, in anticipation of heat and drought stress avoided the catastrophic losses that were later experienced by those who planted at the usual time.

To gain a better understanding of the role of climate variability on peanut growth and yield differences between El Niño and La Niña phases, temperature and rainfall for each location for the planting date of April 26 were analyzed. The higher simulated yields achieved with La Niña events were associated with lower mean air temperatures, lower year-to-year variability in rainfall amounts, higher solar irradiance (except at Tifton), and lower simulated water stress during the pod filling period relative to El Niño events (**Table 3**). In CRPGRO-Peanut, the seed growth rate function for peanuts has its optimum at 24 °C. At higher than optimum temperatures the crop starts to exhibit poorer than optimum fruit formation and partitioning (Boote et al., 1998). Furthermore, the higher year-to-year variability, particularly of rainfall, for El Niño years compared with that of La Niña seasons resulted in higher variability of water stress on crop growth and finally to higher yield variability.

The simulated yields for each of the El Niño and La Niña crop seasons in Tifton are illustrated as bubbles (the area of bubble is proportional to the yield) versus mean air temperature and precipitation during the pod filling stage in **Fig. 4**. The mean temperature and rainfall totals for La Niña and El Niño seasons are also presented as horizontal and vertical lines. The higher yield variability in El Niño years (**Fig. 4b**) compared to La Niña years (**Fig. 4a**) is evident, as is the higher range of precipitation and temperature in El Niño years. The most productive La Niña seasons were those with above average precipitation (**Fig 4a**). In contrast, the three lowest yield seasons (1983, 1987 and 1998) (**Fig 4b**) were associated with above average temperatures and below average precipitation amounts, a combination that resulted in higher simulated water stress compared with the mean values for El Niño years (**Table 3**). The two El Niño years of 1970 and 1964 that received above average rainfall and below average temperatures resulted in the highest simulated yields.

### **3.2 Response to Simulated Irrigation during Pod Filling**

Not surprisingly, irrigation from first pod to harvest maturity combined with tailoring planting dates increased simulated yields by 3 to 10% with exception of Levy (**Table 4**). We attributed these yield responses to reduced (increased) mean air temperatures and increased (decreased) solar irradiance in La Niña (El Niño) during the pod filling period. The yield benefits from tailoring planting date to an ENSO phase and applying irrigation during pod fill relative to the planting date optimized over all years were significant and higher for Tifton than for the Florida sites (**Table 4**). At the Florida locations, yield benefits were only significant during Neutral phases, but caused increased simulated N leaching. The enhanced simulated yields were achieved with small, but not statistically significant in most cases, increases in irrigation water. Tifton required three to four more irrigation applications than the Florida locations. Yield benefits were achieved with earlier plantings, when the mean air temperature was closer to the optimum for peanuts. The weight per seed consistently increased as well, suggesting improved grain quality, and N leaching increased. Overall, irrigation consistently improved yields and grain quality, and lowered CV and N leaching at Tifton during La Niña's (**Table 4**).

### **3.3 Response of Simulated N leaching to ENSO Phases**

We explored the influence of all combinations of subsequent phases (i.e., during the growing season (Mar-Oct) and during the subsequent fallow period (Nov-Feb)) on simulated N leaching. A crop year (from March to October) for our locations was classified based on the ENSO phase that started in October of the previous year, while a fallow period (Nov-Feb) was classified on the ENSO phase of the current year. In Tifton, the higher N leaching occurred when the crop season was followed by El Niño phase. These fallow periods received higher total rainfall amounts than Neutral and La Niña phases (3.67 mm d<sup>-1</sup> versus 3.16 and 2.89 respectively). N leaching tended to be lowest when the subsequent fallow periods were La Niña, which were the driest (2.89 mm d<sup>-1</sup>).

N leaching was substantially higher in Florida due to higher total precipitation, particularly during the growing season (**Table 1**). La Niña or Neutral crop seasons preceding El Niño phase bare fallow periods showed the highest N leaching. This N response was also attributed to the higher rainfall totals observed during El Niño bare

fallow periods compared to Neutral and La Niña. Very high N leaching was also found during Neutral fallow periods following El Niño growing seasons. The combinations of Neutral growing seasons preceding La Niña fallows resulted in the lowest N leaching due to the very low observed precipitation amounts and the efficient crop nitrogen uptake (as evidenced by the higher yields compared with the other two phases (**Table 1**)) during the crop season. N leaching was similar across different ENSO phases when deficit irrigations were applied during the growing season.

Tailoring planting date (with respect to mean yield and yield CV) of rainfed crops decreased total N leaching (crop season + subsequent fallow) for El Niño crop seasons in Tifton by 11 % no matter what phase followed the crop season (**Table 2**). The opposite responses of N leaching were found with Neutral growing seasons. In Florida locations, N leaching decreased consistently at Tallahassee and Milton. Benefits were higher for Milton than Levy and Tallahassee. Across all sites and years, tailoring planting of rainfed management decreased N leaching in 70% of the years while in remaining 30% of the years it remained unchanged or increased.

Small increases in total N leaching (**Table 4**) in most of the cases was found after tailoring planting date of irrigated peanuts to Neutral and El Niño phases in Georgia. The opposite was found for La Niña growing seasons with a decrease of about 4%. N leaching increased in the majority of cases in Tallahassee and Milton and decreased in Levy. These changes were mainly attributed to the more drastic shifting in planting dates for irrigated than for rainfed crops (**Tables 3 and 4**). Overall, tailoring planting of irrigated peanuts for maximum yields decreased (increased) N leaching in 41 (59)% of the years.

#### 4. CONCLUSIONS

It is possible to utilize an ENSO phases that has some forecast value for improving peanut production in Georgia and Florida. ENSO does have an impact on peanut productivity, variability among years, seed quality and susceptibility for nitrogen leaching (**Table 5**). Although results varied from state to state, simulation analyses suggest that farmers can improve their yields (1 to 8%), lower year to year variability (2 to 12%), and nitrogen leaching (1 to 11%) in years characterized as El Niño and La Niña by tailoring planting dates (**Table 5**) at three out of the four locations where the study was

conducted. Although initial analysis (**Table 1**) showed that ENSO had significant ( $p=0.05$ ) impact on yield and CV at Levy, in the final analysis, it showed the least response to tailored planting dates. Sites that appeared to have little discernable influence of ENSO, showed most responses to tailored planting dates. La Niña generally has a very positive effect across the sites. El Niño combined with late planting resulted in lower nitrogen leaching. According to simulation, the optimum planting window for rainfed production was 21 days later in El Niño years with no consistent pattern (14 days early to 21 days late) among locations in La Niña years (**Table 5**). Tailoring planting dates and applying irrigation, showed that simulated N leaching would increase in more than half of the years, with exception of Tifton (**Table 5**).

The results of this study may have been different if we had tailored planting date and irrigation management to minimize for N leaching, seed quality or even income return rather for production risk and seed yield. An economic evaluation of the management decisions would not be realistic since the indirect effects of climate on insect pests and diseases were not modeled. This would become an important factor because fungicide applications, the measures producers take against diseases, are some of the major production costs of peanuts especially in the Southeast US (Pedelini, 1988).

Further research is needed before options derived from simulation and optimization can be recommended and adopted with confidence by growers and extension advisors. Farmers also might benefit from adjusting land allocation among crops based on ENSO phase (Jones et al., 2000). A joint research and extension initiatives has been launched (Jagtap et al., 2001c) to disseminate climate information to growers in Florida. This initiative includes components for generation, communication and use of climate information as well as an implementation and evaluation.

## REFERENCES

- Boote KJ, Jones JW, and Hoogenboom G (1998) Simulation of crop growth: CROPGRO Model. In Peart RM and Curry RB (eds) *Agricultural Systems Modeling and Simulation*, Marcel Dekker, Inc., New York, p 651-692
- Boote KJ, Jones JW, Hoogenboom G, and Wilkerson GG (1997). Evaluation of the CROPGRO-Soybean model over a wide range of experiments. In Kropff, MJ, Teng, PS, Agarwal, PK, Bouma, J, Bouman, BAM, Jones, JW, van Laar, HH (Eds.), *Applications*

of systems. Approaches at the field level. Kluwer Academic Publishers, Great Britain, pp 113-133.

Boote KJ, Jones JW, and Pickering NB (1996) Potential uses and limitations of crop models. *Agron. J.* 88: 704-716

Boote, KJ., and Tollenaar, M (1994) Modeling genetic yield potential. In: Boote, KJ, Bennett, JM, Sinclair, TR, and Paulsen, GM (Eds.), *Physiology and Determination of Crop Yield*. ASA-CSSA-SSSA, Madison, WI, pp. 533-565

Boote KJ, Bennet JM, Jones JW, and Jowers HE (1989) On-farm testing of peanut and soybean models in north Florida. Paper No. 89-4040. Am. Soc. Agr. Engr., St Joseph, MI 49085

Boote KJ and Jones JW (1988a) Application of, and limitations to crop growth simulation model to fit crops and cropping systems to semi-arid environments. In Bidinger FR and Johansen C (Eds.), *Drought Research Priorities for the Dryland Tropics*. ICRISAT, A.P. 502324, India, pp 63-75

Boote KJ, Jones JW, Hoogenboom G, Wilkerson GG, Jagtap SS (1988b) PEANUTGRO V1.1 Peanut Crop Growth Simulation Model: Users Guide. Florida Agricultural Experiment Station Journal No.8420. Agricultural Engineering Department and Agronomy Department University of Florida, Gainesville, Florida 32611, and IBSNAT Project, Department of Agronomy and Soil Science, University of Hawaii, Honolulu, Hawaii 96822.

Brown MB, and Forsythe AB (1974) Robust tests for the equality of variances. *Journal of the American Statistical Association* 69: 264-267

Conover, WJ (1999) *Practical nonparametric statistics*, 3<sup>rd</sup> Edition. John Wiley & Sons, New York

EarthInfo (1996) Database guide for EarthInfo CD NCDC Summary of the day. EarthInfo, Boulder, CO, 46pp

Ferreyra RA, Podesta GP, Messina CD, Letson D, Dardanelli J, Guevara E, and Meira S (2001) A linked-modeling framework to estimate maize production risk associated with ENSO-related climate variability in Argentina. *Agric. For. Meteorol.* 107: 177-192

Gilbert R, Boote KJ, Bennett JM (2001) On-farm testing of the PNUTGRO crop growth model in Florida. Florida Agricultural Experiment Station Journal Series No. R-08279, University of Florida, Gainesville, FL, USA

Green PM, Legler DM, Miranda V, and O'Brien JJ (1997) The North American Climate Patterns Associated with El Niño-Southern Oscillation. Report 97-1, Center for Ocean-Atmospheric Prediction Studies, Tallahassee, FL 32306-2840, 17 pp

Hansen JW, Hodges A, and Jones JW (1998) ENSO influences on agriculture in the southeastern United States. *Journal of Climate* 11: 404-411

Hansen JW, Jones JW, Irmak A, and Royce F (2001) El Niño – Southern Oscillation impacts on crop production in the Southeast United States. In: Hatfield JL, Volenec JJ, Dick WA and Kral DM (Eds) *Impacts of El Niño and climate variability on agriculture*. ASA Special Publication no. 63, Madison, Wisconsin, USA.

Hildebrand P, Caudle A, Cabrera V, Downs M, Langholtz M, Mugisha A, Sandels R, Shriar A, and Veach D (2000) Potential use of long range climate forecasts by agricultural extension agents in Florida. Florida Consortium Technical Report FC-UF-2000-001

Hoogenboom G, and Gresham DD (1997) Automated Weather Station Network. In: Hatcher KJ (Ed.), Proceedings of the 1997 Georgia Water Resources Conference. Institute of Ecology, The university of Georgia, Athens, Georgia, p 483-486

Hoogenboom G, Jones JW, Wilkens PW, Batchelor WD, Bowen WT, Hunt LA, Pickering NB, Singh U, Godwin DC, Baer B, Boote KJ, Ritchie JT, and White JW (1994) Crop models. In Tsuji GY, Uehara G, and Balas S (eds) DSSAT v3. University of Hawaii, Honolulu, Hawaii, p 95-244

Hoogenboom G, Jones JW, and Boote KJ (1992) Modeling growth, development, and yield of grain legumes using SOYGRO, PnutGRO, and BEANGRO: A review. Trans. ASAE 35: 2043-2056

Jagtap SS, and Jones JW (2001a) Scaling-Up Crop Models For Regional Yield and Production Estimation: A case-Study of Soybean Production in the State of Georgia, USA. Pp: 171-186 (Eds). K. Kobayashi, Proceedings of Crop Monitoring and Prediction at Regional Scales, Tsukuba, Japan, February 19-22, 20001

Jagtap SS, Jones JW, Zazueta F, Jackson J, Beck H, and Hildebrand P (2001b) Bridging the gap between climate prediction and its application in Florida agriculture. Technical Report FC-UF-2001-1. Agriculture. And Biological Eng., Uni. Of Florida, Gainesville, FL 32611

Jagtap SS, Jones JW, Hildebrand P, O'Brien JJ, Podestá G, Letson D, Zazueta F, Zierden D (2001c). Responding to Stakeholders Demand for Climate Information: From Research to Practical Applications in Florida, Technical Report FC-UF-2001-4, Uni. of Florida, Gainesville, USA

JMA, 1991. Climate charts of sea-surface temperature of the western North Pacific and the global ocean. Marine Department, JMA, 51pp.

Jones JW, Hansen JW, Royce FS, and Messina CD (2000) Potential benefits of climate forecasting to agriculture. Agriculture, Ecosystems and Environment, 82: 169-184

Jones JW, Tsuji GY, Hoogenboom G, Hunt LA, Thornton PK, Wilkens PW, Imamura DT, Bowen WT, and Singh U (1998) Decision support system for agrotechnology transfer: DSSAT v3. In: Tsuji GY, Hoogenboom G, and Thornton PK (Eds.) Understanding options for agricultural production. Kluwer Academic Publishers, Dordrecht, The Netherlands, p 157-177

Kern SJ (1994) Spatial pattern of soil organic carbon in the contiguous United States. Soil Science Society of America Journal 58:439-455

Kern SJ (1995) Geographic pattern of soil water holding capacity in the contiguous United States. Soil Science Society of America Journal 59:1126-1133

Letson D, Hansen J, Hildebrand P, Jones JW, O'Brien J, Podesta G, Royce F, and Zierden D (2001) Florida's agriculture and climatic variability: Reducing vulnerability. Florida Consortium Technical Report FC-UF-2001-001

Levene H (1960) Robust tests for equality of variance. In: Olkin I (Ed) Contributions to probability and statistics. Palo Alto, Stanford University Press.

Mann HB, and Whitney DR (1947) On a test of whether one or two random variables is stochastically larger than the other. Annals of Mathematical Statistics 18: 50-60

- Mavromatis T, Boote KJ, Jones JW, Irmak A, Shinde D, and Hoogenboom G (2001) Developing genetic coefficients for crop simulation models using data from crop performance trials. *Crop Sci.* 41: 40-51
- Meinke H, and Hammer GL (1995) Climatic risk to peanut production: a simulation study for Northern Australia. *Aust. J. Exp. Agric.* 35: 777-780
- Meinke H, Stone RC, and Hammer GL (1996) SOI phases and climatic risk to peanut production: a case study for northern Australia. *Int. J. Climatol.* 16: 783-789.
- Messina CD, Hansen JW, and Hall AJ (1999) Land allocation conditioned on ENSO phases in the Pampas of Argentina. *Agric. Syst.* 60: 197-212
- Meyers SD, O'Brien J, and Thelin E (1999) Reconstruction of monthly SST in the Tropical Pacific ocean during 1868-1993 using adaptive climate basis functions. *Mon. Wea. Rev.* 127: 1599-1611
- Murphy DV, Macdonald AJ, Stockdale EA, Goulding KWT, Fortune S., Gaunt, JL, Poulton PR, Wakefield JA, Webster CP, and Wilmer WS (2000) Soluble organic nitrogen in agricultural soils. *Biol Fertil Soils* 30: 374-387
- NASS (1997) Usual planting and harvesting dates for the US field crops. *Agricultural Handbook No. 628*, National Agricultural Statistics Service. Washington, D.C.
- Pedelini, R., (1988) Effect of harvest date on yield, grade, and seed quality of "Southern Runner" peanut. M.S. Thesis. University of Florida
- Phillips JG, Rajagopalan B, Cane MA, and Rosenzweig C (1999) The role of ENSO in determining climate and maize yield variability in the US cornbelt. *Int. J. Climatol.* 19: 877-888
- Phillips JG, Cane MA and Rosenzweig C (1998). ENSO, seasonal rainfall patterns and simulated maize yield variability in Zimbabwe. *Agric. For. Meteorol.* 90: 39-50
- Raymer PL, Day JL, Coy AE, Baker SH, Branch WD, and LaHue SH (1997) 1996 Field Crops Performance Tests: Soybean, Peanut, Cotton, Tobacco, Sorghum, Grain Millet and Summer Annual Forages. Research Report, No 644, University of Georgia
- Raymer PL, Day JL, Fisher CD, and Heyerdahl RH (1989) 1988 Field Crops Performance Tests: Soybeans, Peanuts, Cotton, Tobacco, Sorghum, Summer Annual Forages, and Sunflowers. Research Report, No 568, University of Georgia
- Singh P, Boote KJ, Rao AY, Iruthayaraj MR, Sheikh AM, Hundal SS, Narang RS, and Singh P (1994) Evaluation of the groundnut model PNUTGRO for crop response to water availability, sowing dates, and seasons. *Field Crops Res.* 39:147-162

## FIGURE CAPTIONS

Figure 1. Peanut production regions in the Southeastern USA and the sites used for calibration and validation (O) of the CROPGRO-Peanut model, and in this simulation (●) study. Usual range of peanut plating dates and harvesting dates are also shown.

Figure 2. Simulated mean rainfed yield by ENSO phases across plantings in (a) Tifton, (b) Tallahassee, (c) Milton, and (d) Levy.

Figure 3. Simulated coefficient of variation (CV) of rainfed yields by ENSO phases across plantings in (a) Tifton, (b) Tallahassee, (c) Milton, and (d) Levy.

Figure 4. Simulated yield (represented as bubbles where the greater the area the higher the yield) vs. mean air temperature and precipitation from first seed (FS) to harvest maturity (HM) for each of the (a) La Niña and (b) El Niño years in Tifton. The mean temperature and rainfall totals for La Niña and El Niño events are presented as horizontal and vertical lines.

Table 1. Simulated mean rainfed yield and coefficient of variation CV, weight per 100 seeds (WSD) and N leaching (NL) for each ENSO phase for the current planting dates at the four locations.

-----Tifton-----						-----Tallahassee-----						
El Niño PHASE	n	Planting Date	Yield (CV)	WSD	NL <sup>‡</sup>	n	Planting Date	Yield (CV)	WSD	NL		
			(kg ha <sup>-1</sup> )	(g)	(kg ha <sup>-1</sup> )				(kg ha <sup>-1</sup> )	(g)	(kg ha <sup>-1</sup> )	
			(%)							(%)		
All Years	52	May 10	3262 (24)	50	64	51	Apr 26	5226 (11)	53	192		
La Niña	11	May 10	3672 (15)	51.4	68	11	Apr 26	5385 (11)	52.9	248cd <sup>†</sup>		
Neutral	29	May 10	3100 (28)	48.5	64	28	Apr 26	5252 (9)a <sup>‡</sup>	53.1	176c		
El Niño	12	May 10	3279 (18)	52.0	59	12	Apr 26	4881 (18)a	52.1	177d		

-----Milton-----					-----Levy-----							
El Niño PHASE	n	Planting Date	Yield (CV)	WSD	NL	n	Planting Date	Yield (CV)	WSD	NL		
			(kg ha <sup>-1</sup> )	(g)	(kg ha <sup>-1</sup> )				(kg ha <sup>-1</sup> )	(g)	(kg ha <sup>-1</sup> )	
			(%)							(%)		
All Years	51	Apr 26	5200 (17)	54	179	43	Apr 26	5405 (13)	53	227		
La Niña	11	Apr 26	5499 (15)	55.7	195	9	Apr 26	5558 (14)	53.5	257		
Neutral	28	Apr 26	5246 (15)a	53.7	176	23	Apr 26	5544a (9)b	55.5	220		
El Niño	12	Apr 26	4819 (25)a	53.1	172	11	Apr 26	4989a (20)b	53.4	216		

<sup>‡</sup>Nitrogen leaching was estimated on seasonal basis (growing season (Mar-Oct) + subsequent fallow period (Nov – Feb)).

<sup>†</sup>Means and <sup>‡</sup> CV of El Niño, La Niña and Neutral phases with common letters within each location differ significantly at the 0.05 probability level.

Table 2. Optimum planting dates for all years and by ENSO phases and % changes in yield and CV, weight per 100 seeds (WSD) and N leaching (NL) at the four locations.

-----Tifton-----					-----Tallahassee-----			
El Niño PHASE	Planting Date	Yield (CV)	WSD (%)	NL <sup>†</sup> (%)	Planting Date	Yield (CV)	WSD (%)	NL (%)
All years	Apr 12	+5.2 (+1.4)	+0	+0	Apr 19	+0.0 (-1)	+0	+0
La Niña	Apr 26	+8.1 (-12)	+3.1	-1.3	Apr 19	+1.8 (0)	+1.5	-0.4
Neutral	Apr 12	+4.7 (+5)	+0.2	+8.1	Apr 26	0.0 (-2)	0.0	0.0
El Niño	May 31	+3.1 (-10)	+0.6	-11	May 17	+1.3 (-2)	+1.2	-3.1

-----Milton-----					-----Levy-----			
El Niño PHASE	Planting Date	Yield (CV)	WSD (%)	NL (%)	Planting Date	Yield (CV)	WSD (%)	NL (%)
All years	May 3	+0 (-2)	+0	+0	May 3	+0 (-2)	+0	+0
La Niña	May 17	-1.4 (-7)	0.0	-3.6	May 3	+0.4 (-2)	+2.2	-3.4
Neutral	May 3	-0.1 (-3)	+0.2	-2.7	Apr 19	+1.0 (-6)	+0.2	-2.2
El Niño	May 17	+4.4 (-3)	+3.0	-9.2	May 3	+0.5 (0)	-0.7	+2.6

<sup>†</sup>Nitrogen leaching was estimated on seasonal basis (growing season (Mar-Oct) + subsequent fallow period (Nov – Feb)).

Table 3. Simulated average yield, temperature, solar irradiance and water stress on growth (WS, a ratio) from first seed to harvest maturity for each ENSO phase for the planting date of Apr 26 at the four locations. Statistics include the standard deviation (STD) of simulated variables in parentheses.

PHASE	-----Tifton-----					-----Tallahassee-----				
	Yield	Tmean	Rad	Rain	WS	Yield	Tmean	Rad	Rain	WS
	(kg ha <sup>-1</sup> )	(C <sup>o</sup> )	(MJ / m <sup>2</sup> day)	(mm)		(kg ha <sup>-1</sup> )	(C <sup>o</sup> )	(MJ / m <sup>2</sup> day)	(mm)	
La Niña	3971 (508)	26.5 (0.4)	20.8 (0.4)	335 (72)	0.136 (0.091)	5385 (603)	26.9 (0.4)	20.5 (0.6)	483 (115)	0.046 (0.072)
Neutral	3157 (909)	26.9 (0.7)	21.3 (0.6)	292 (100)	0.245 (0.179)	5252 (477)	27.2 (0.6)	20.4 (1.0)	481 (150)	0.040 (0.077)
El Niño	3213 (763)	26.9 (0.7)	21.4 (0.7)	350 (124)	0.191 (0.112)	4881 (879)	27.3 (0.5)	20.4 (1.0)	492 (185)	0.064 (0.093)

PHASE	-----Milton-----					-----Levy-----				
	Yield	Tmean	Rad	Rain	WS	Yield	Tmean	Rad	Rain	WS
	(kg ha <sup>-1</sup> )	(C <sup>o</sup> )	(MJ / m <sup>2</sup> day)	(mm)		(kg ha <sup>-1</sup> )	(C <sup>o</sup> )	(MJ / m <sup>2</sup> day)	(mm)	
La Niña	5499 (833)	26.6 (0.4)	21.5 (0.5)	421 (125)	0.088 (0.080)	5558 (762)	26.7 (0.3)	19.5 (0.7)	605 (158)	0.036 (0.076)
Neutral	5246 (769)	27.0 (0.6)	21.0 (1.0)	484 (173)	0.065 (0.097)	5544 (479)	26.9 (0.6)	19.5 (0.8)	596 (96)	0.010 (0.022)
El Niño	4819 (1218)	27.0 (0.6)	21.2 (0.8)	449 (148)	0.099 (0.144)	4989 (989)	27.3 (0.5)	19.2 (0.5)	662 (234)	0.040 (0.073)

Table 4. Optimum planting dates by ENSO phases for irrigated peanuts and changes in irrigated modeled yield, irrigation days, weight per 100 seeds (WSD) and N leaching (NL). Statistics include the coefficient of variation CV of the simulated yield and the number of irrigations (IR) for current planting dates.

-----Tifton-----						-----Tallahassee-----				
El Niño PHASE	Planting Date	IR (#)	Yield (CV) (%)	WSD (%)	NL <sup>†</sup> (%)	Planting Date	IR (#)	Yield (CV) (%)	WSD (%)	NL (%)
Irrigated	May 10	7.1				Apr 26	2.2			
La Niña	Apr 5	-1.0	+10.2* (-1)	+2.6	-4.4	Apr 5	+0.2	+4.6 (-1)	-0.7	-1.5
Neutral	Mar 22	+0.4	+9.8* (+2)	+3.4*	+5.4	Mar 15	+0.9*	+6.9* (+1)	+5.6*	+8.8
El Niño	Mar 29	+0.1	+8.8* (+3) <sup>†</sup>	+1.5	+1.5	Apr 5	+0.6	+4.2* (0)	+3.9	+3.5

-----Milton-----						-----Levy-----				
El Niño PHASE	Planting Date	IR (#)	Yield (CV) (%)	WSD (%)	NL (%)	Planting Date	IR (#)	Yield (CV) (%)	WSD (%)	NL (%)
Irrigated	Apr 26	2.7				Apr 26	1.9			
La Niña	Mar 29	+0.8	+3.3 (0)	+0.9	+2.0	Apr 5	+1.0	+4.0 (0)	+1.3	-6.5
Neutral	Mar 15	+0.7	+6.1* (-3)	+3.9*	+8.4	Mar 29	+0.8*	+6.8* (-2)	+2.7*	-2.7
El Niño	Apr 12	+1.0	+4.1 (+1)	+1.8	-0.6	Apr 26	+0.2	0.0 (0)	0.0	0.0

<sup>‡</sup>Nitrogen leaching was estimated on seasonal basis (growing season (Mar-Oct) + subsequent fallow period (Nov – Feb)).

\*Changes in means and <sup>†</sup>CV of ENSO phases that differ significantly at the 0.05 probability level.

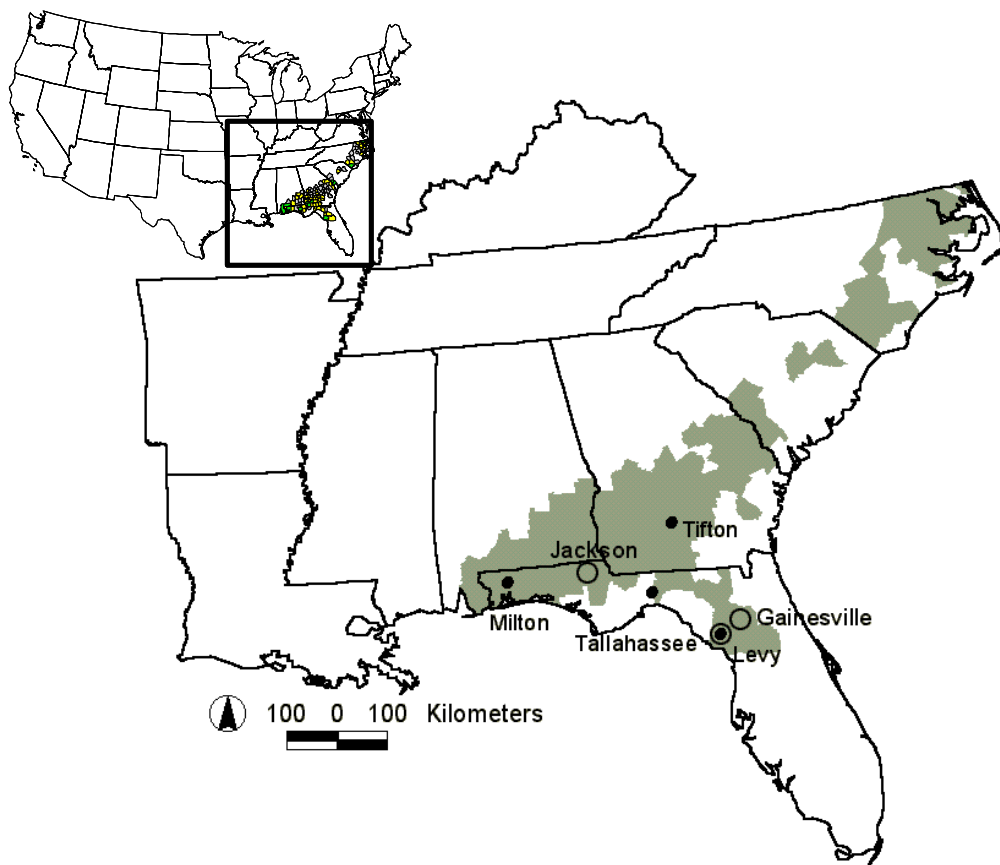
**Table 5.** Summary of potential benefits of tailored planting dates according to the phases of ENSO on peanut yield, yield variability (CV), nitrogen leaching, and number of irrigations averaged over La Niña and El Niño years at the study sites

ENSO Phase	Site	Planting <sup>†</sup>	Yield	CV	Leaching
		Date change	=== % Change ===		
<b>Rainfed Production</b>					
<b>La Niña</b>	Tifton	-14	+8	-12	-1
	Tallahassee	-7	+1	-2	nc
	Milton	+21	-1	-7	-4
	Levy	+7	nc	-2	-3
<b>El Niño</b>	Tifton	+21	+3	-10	-11
	Tallahassee	+21	+1	-2	-3
	Milton	+21	+4	-3	-9
<b>Irrigated Production</b>					
Season	Sites	Planting Date change	Yield	Irrigations	Leaching
=== Change ===					
La Niña	Tifton	-35	+10 %	-1	-4%

<sup>†</sup>A positive planting date change refers to delays in planting whereas negative means an early planting.

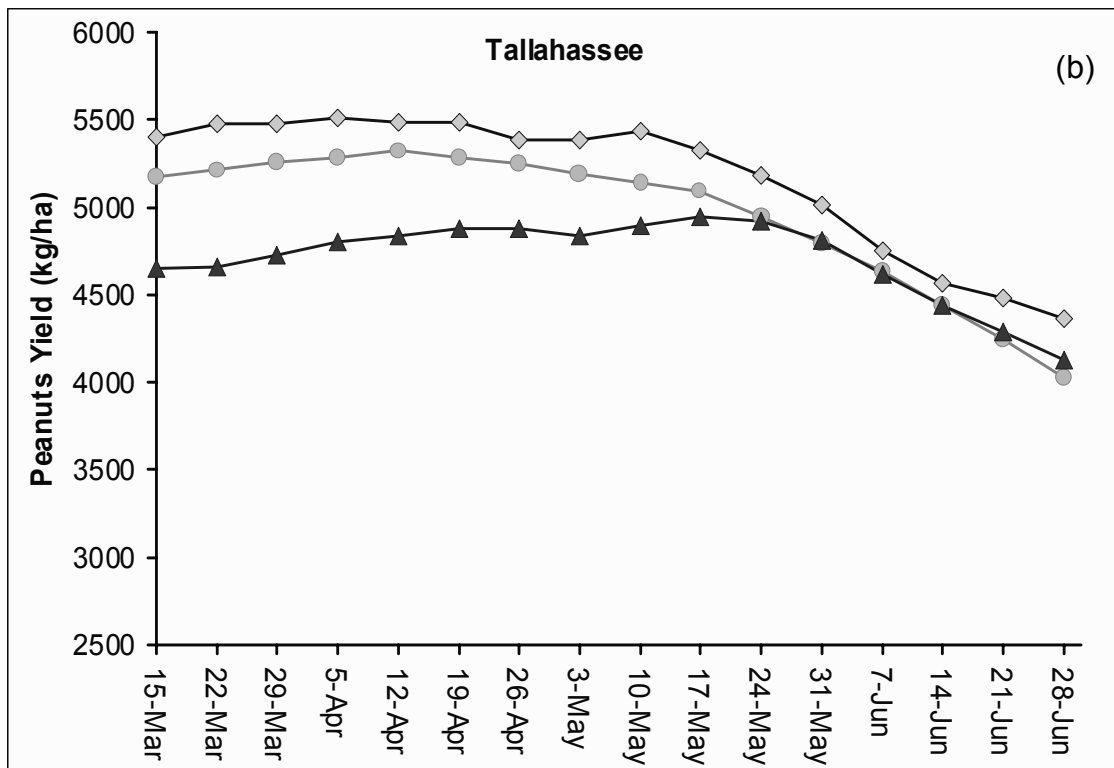
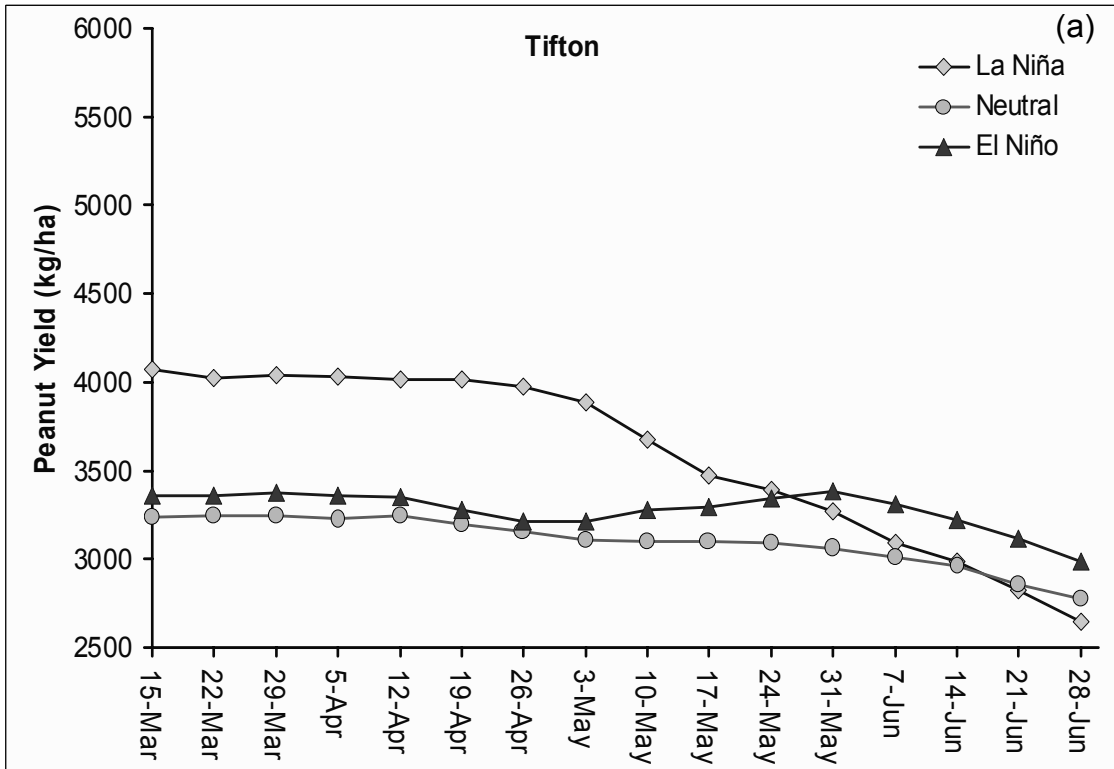
<sup>††</sup>A positive number refers to increase in value whereas negative means reduction in value

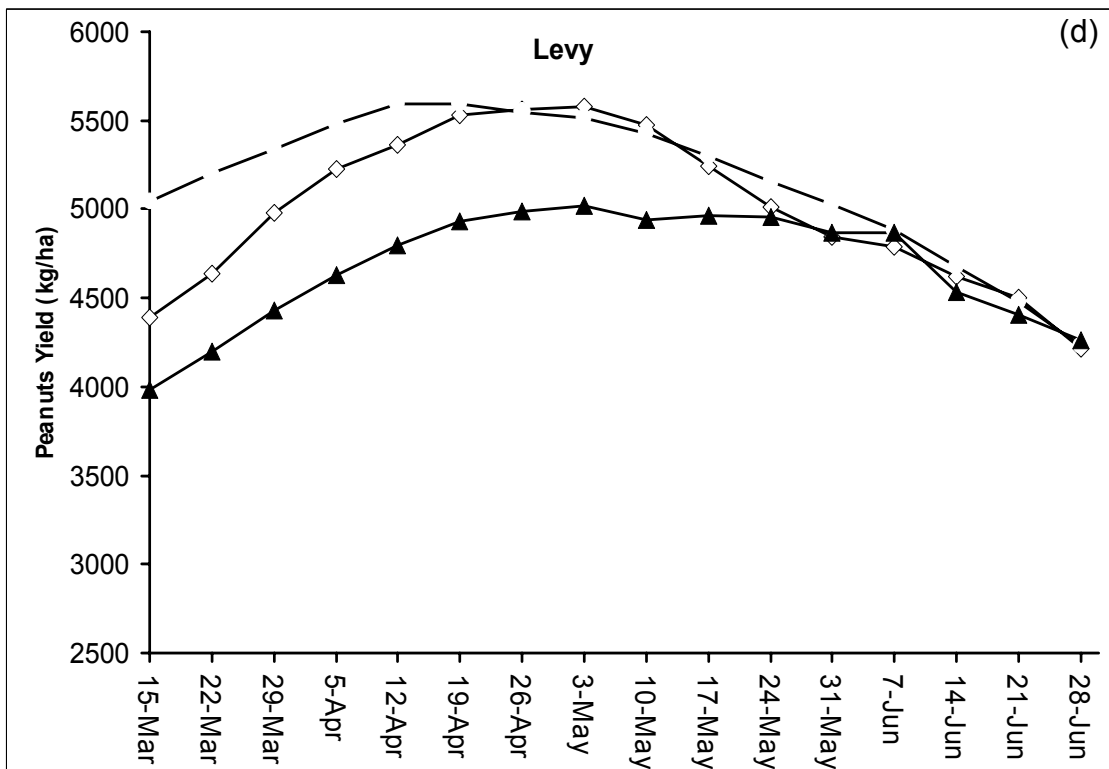
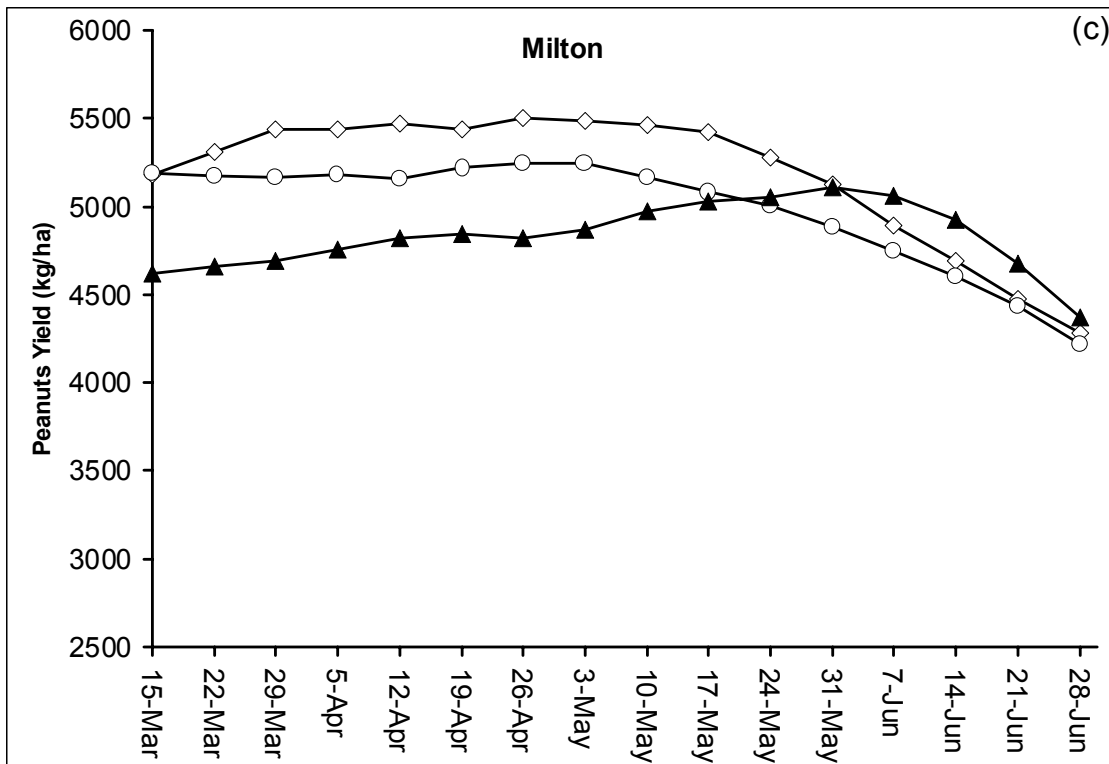
\*nc means change was less than 1%



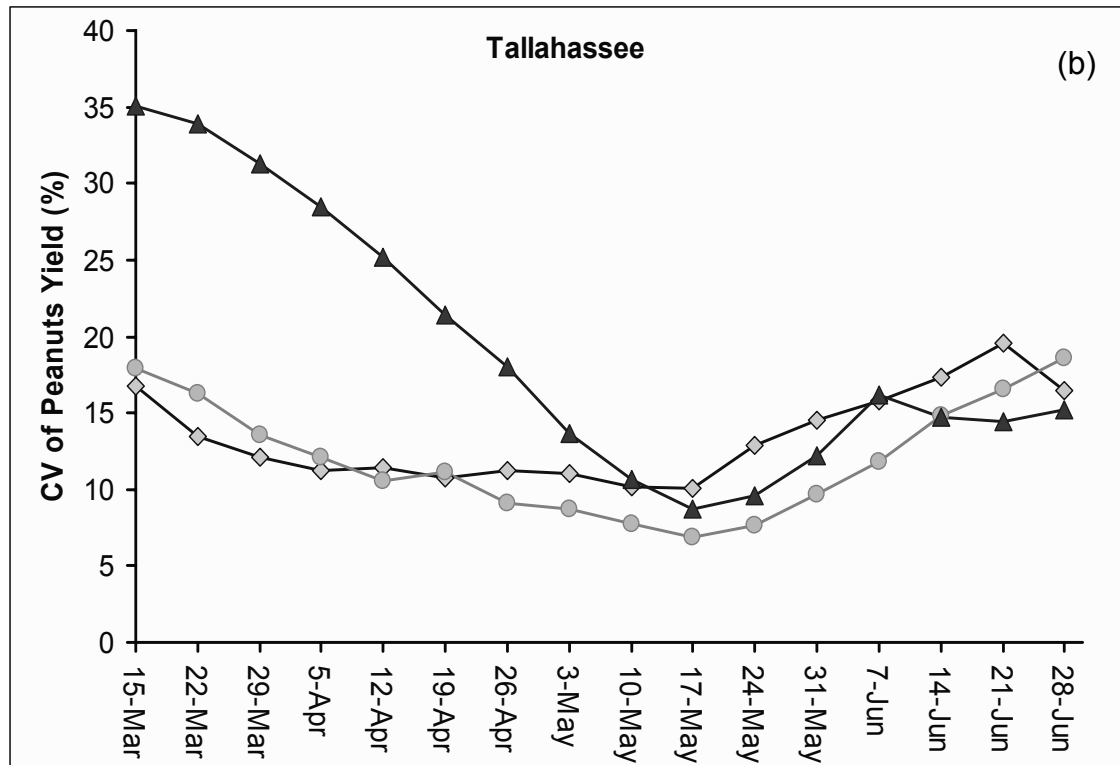
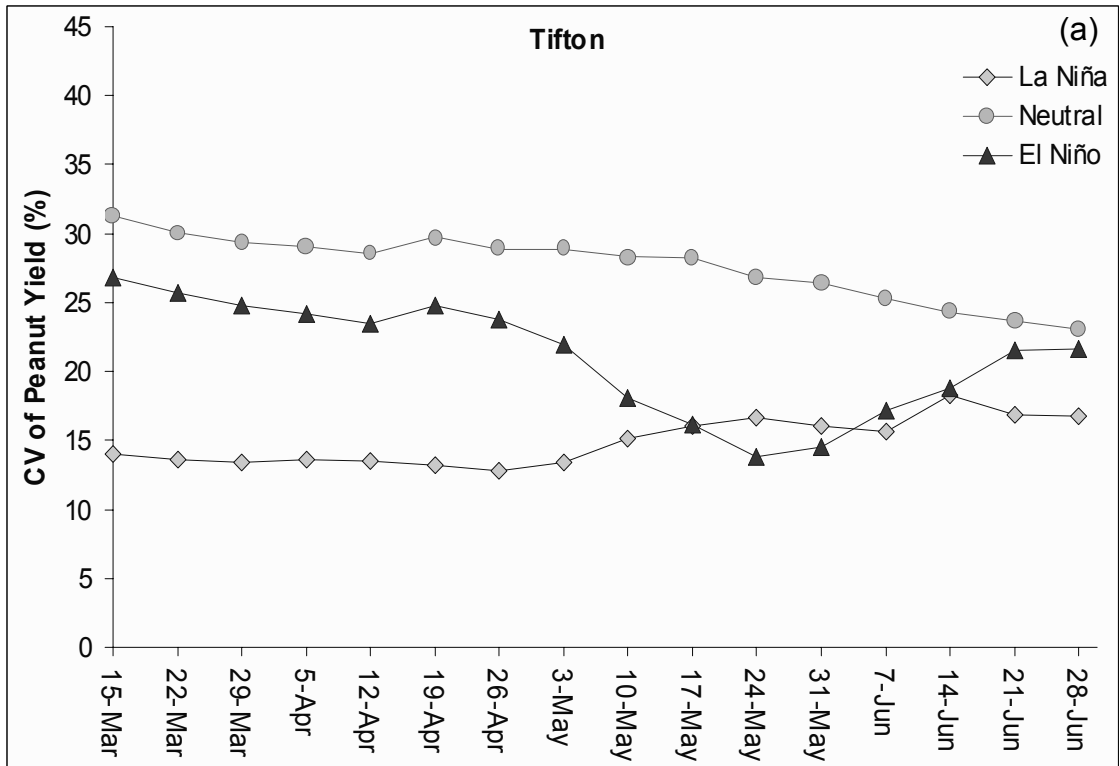
State	Planting Dates			Harvesting Dates		
	Early	Normal	Late	Early	Normal	Late
Georgia	15-Apr	25 Apr-20 May	10-Jun	5-Sep	10 Sep-15 Oct	1-Nov
Florida	1-Apr	15 Apr-1 May	15-May	15-Aug	15 Sep-15 Oct	15-Nov

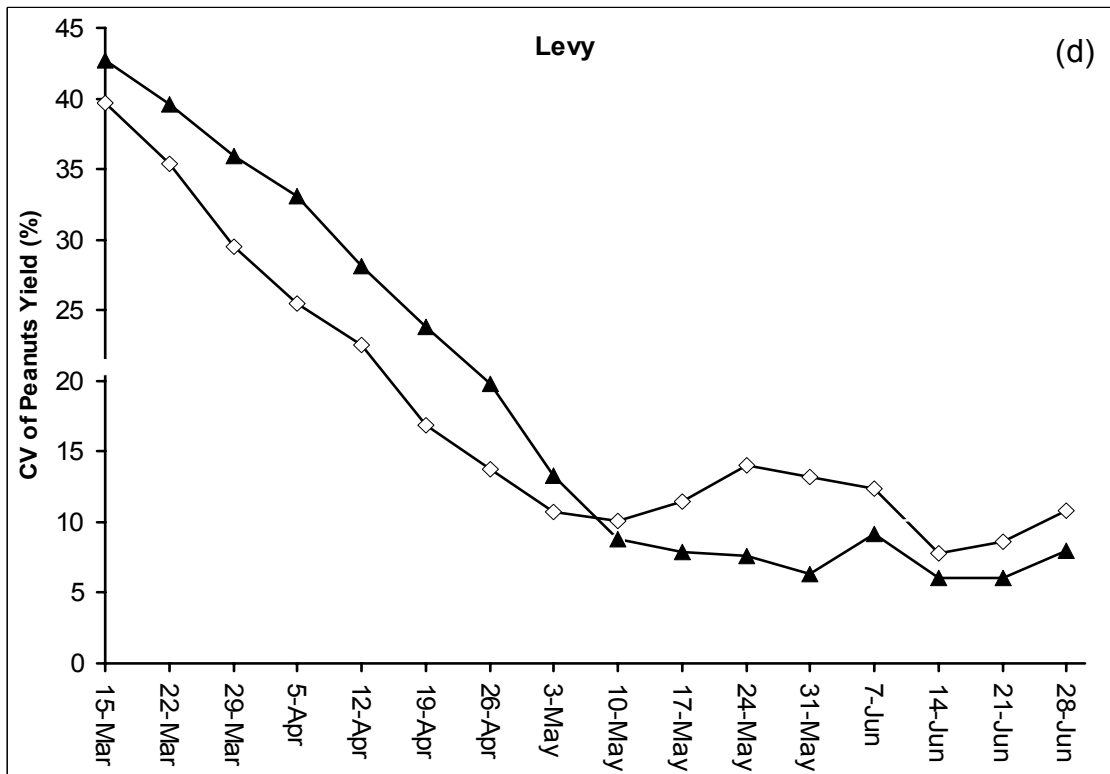
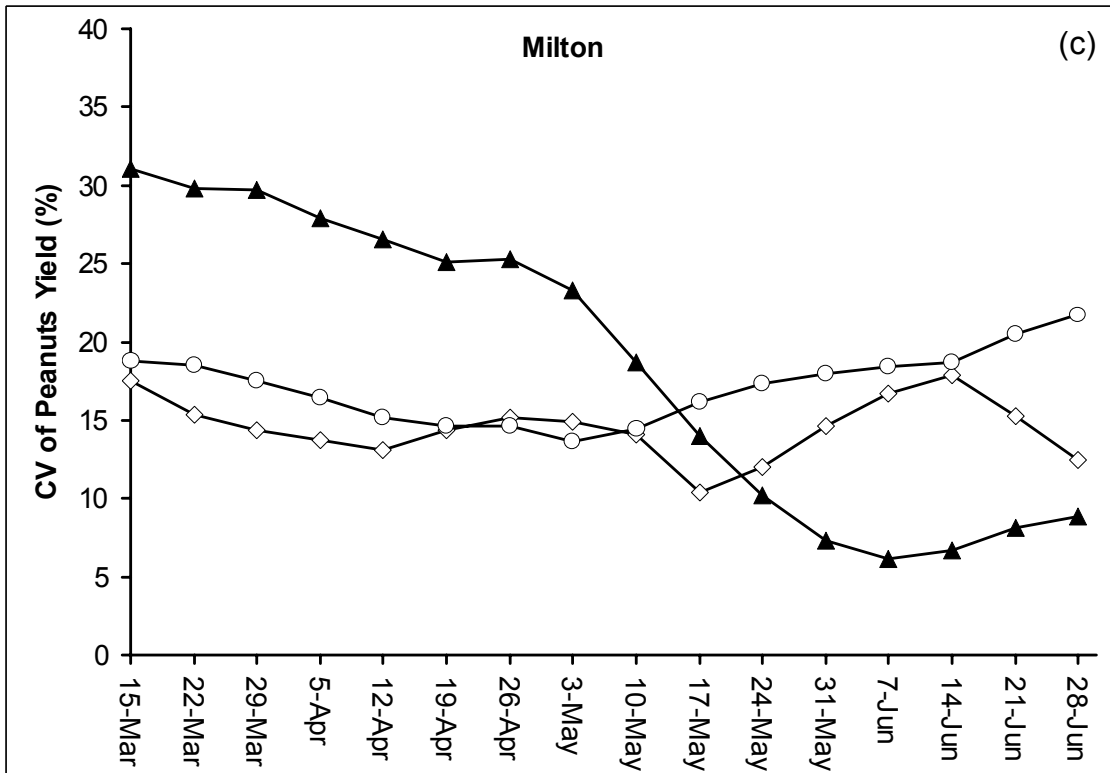
Fig. 1



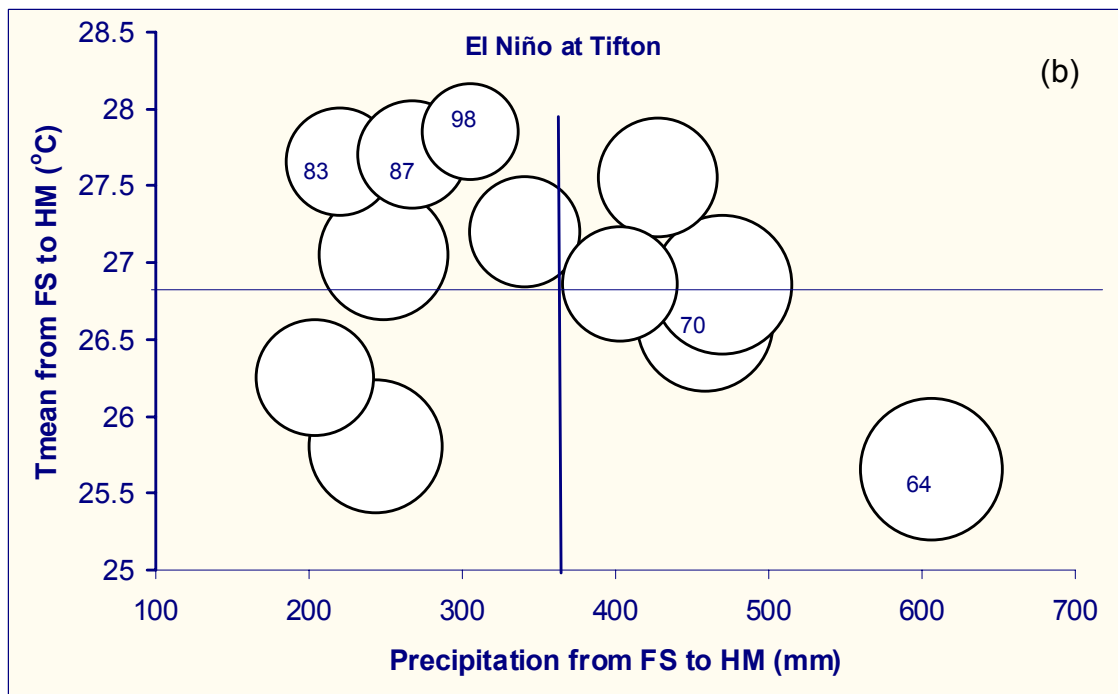
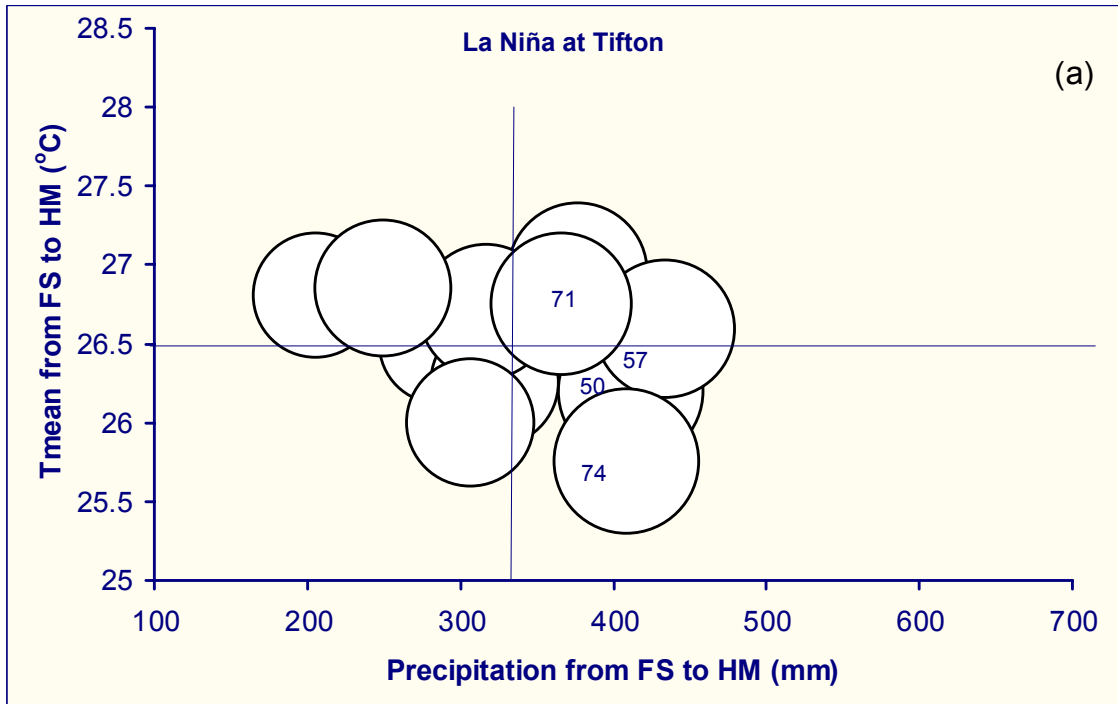


**Fig 2**





**Fig. 3**



**Fig. 4**